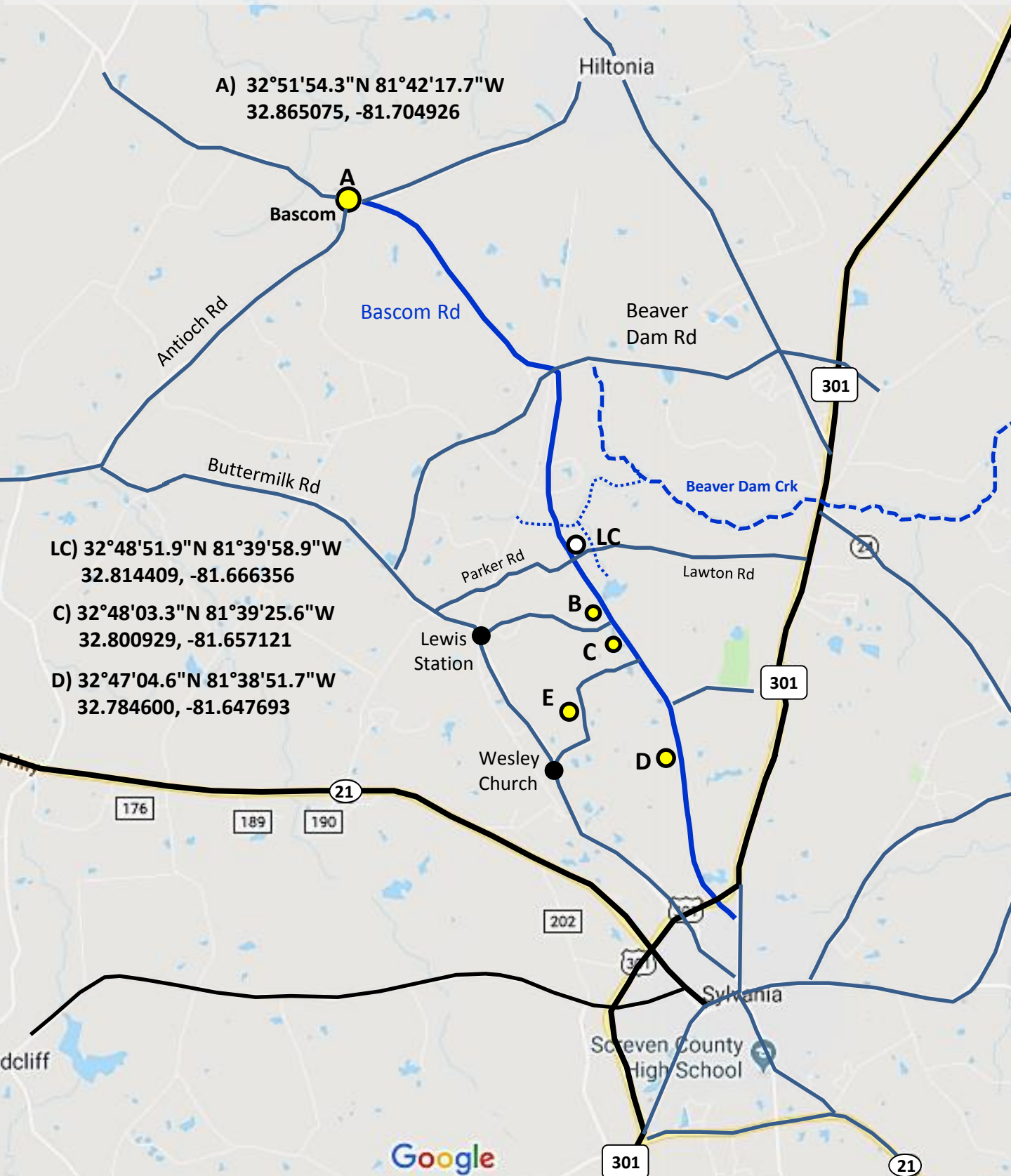
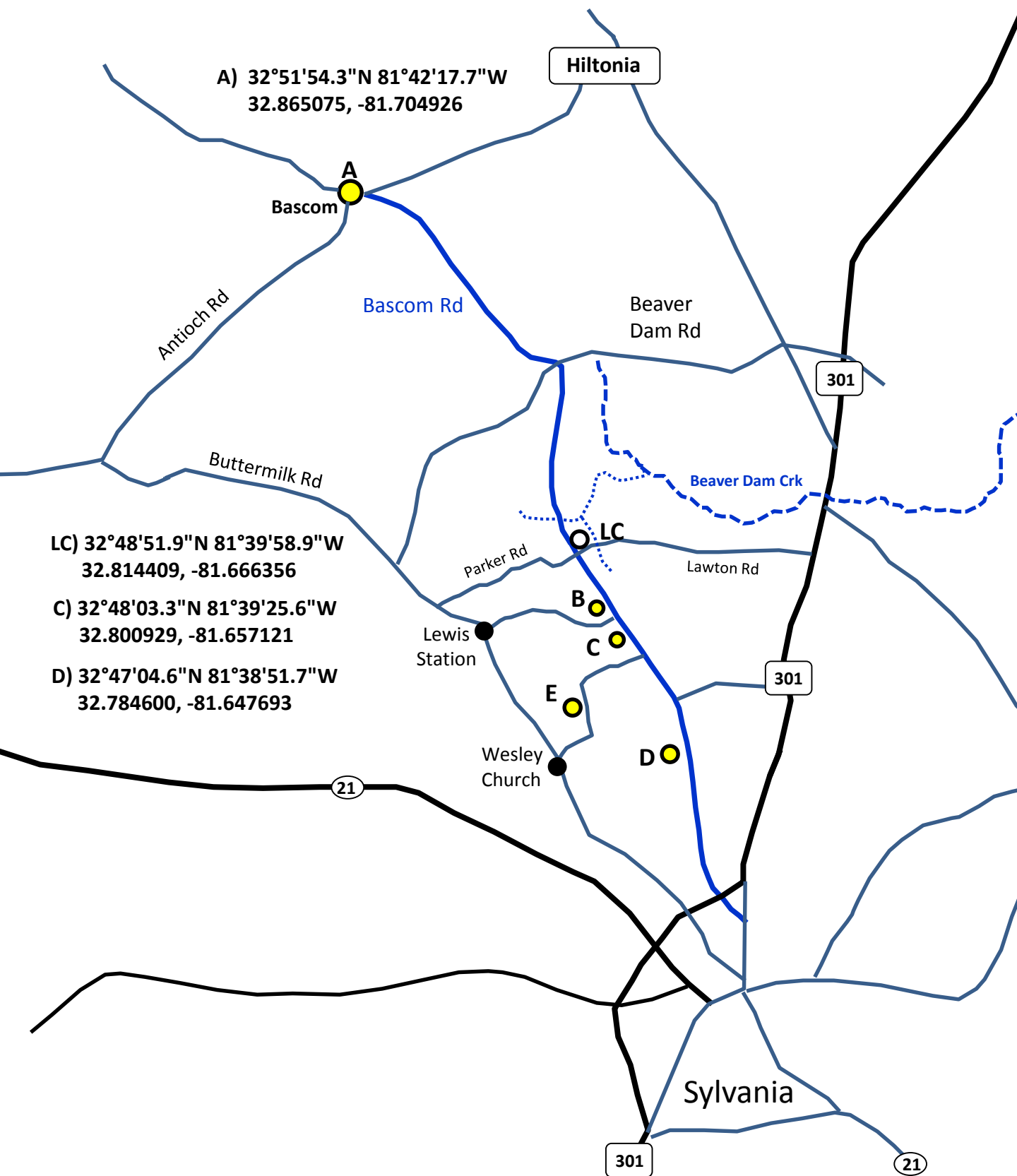


From the early 1800s to present day, descendants of Stephen D. Lewis have owned various homes, farms and stores near Bascom, Beaver Dam and Sylvania.

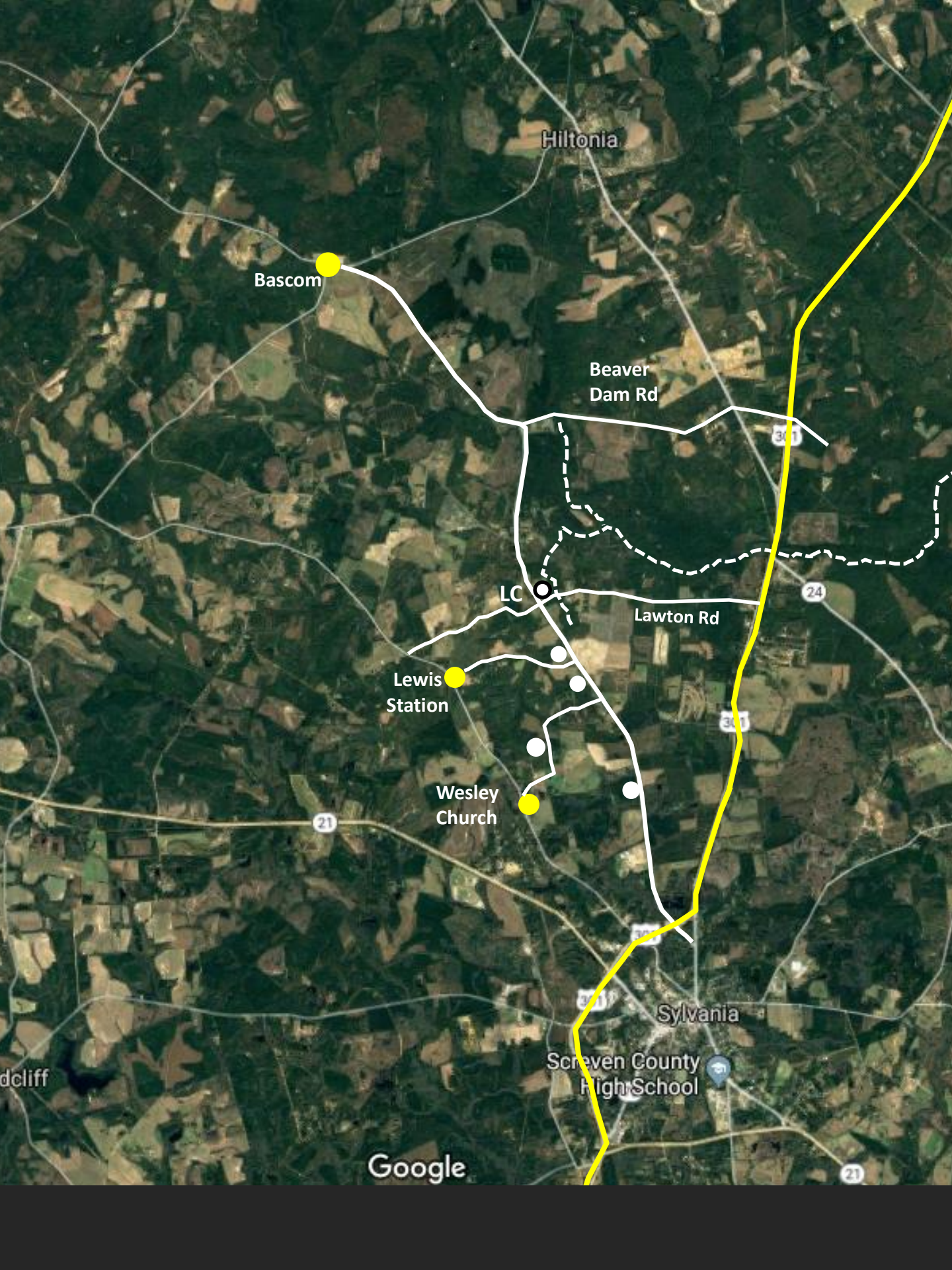


A) Stephen B Lewis B) A.F. Lewis C) R. A. Lewis, Sr. D) R.A.Lewis, Jr.
E) Dr. A. D. Lewis LC) Lewis Cemetery

From the early 1800s to present day, descendants of Stephen D. Lewis have owned various homes, farms and stores near Bascom, Beaver Dam and Sylvania.



- A) Stephen B Lewis B) A.F. Lewis C) R. A. Lewis, Sr. D) R.A.Lewis, Jr.
E) Dr. A. D. Lewis LC) Lewis Cemetery



Hiltonia

Bascom

Beaver Dam Rd

31

LC

Lawton Rd

24

Lewis Station

31

Wesley Church

21

Sylvania

Screven County High School

Google

21

Rufus A. Lewis Sr.
Store Location
1950s to 1970s

32°48'03.3"N 81°39'24.6"W
32.800913, -81.656825

Bascom Rd

Wesley Church Rd

Google

Imagery